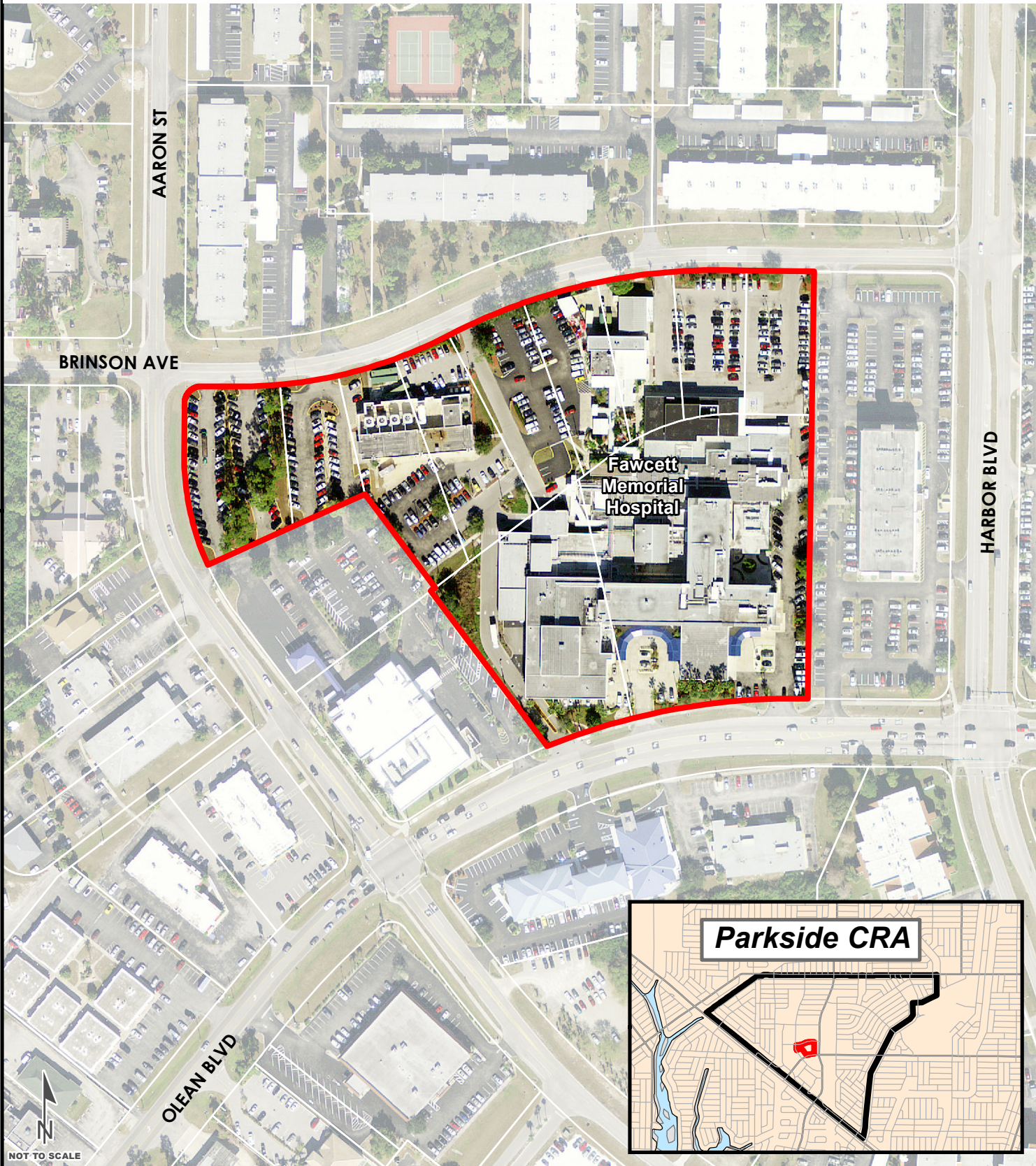




Land Information
Section

Parkside Community Redevelopment Area

Fawcett Memorial Hospital



This map is a representation of compiled public information. It is believed to be an accurate and true depiction for the stated purpose, but Charlotte County and its employees make no guarantees, implied or otherwise, to the accuracy or completeness. We therefore do not accept any responsibilities as to its use. This is not a survey, or is it to be used for design. Reflected dimensions are for informational purposes only and may have been rounded to the nearest tenth. For precise dimensions, please refer to recorded plats and related documents. © Copyright 2009 Port Charlotte, FL by Charlotte County. Prepared 10/2011 by D. Vance